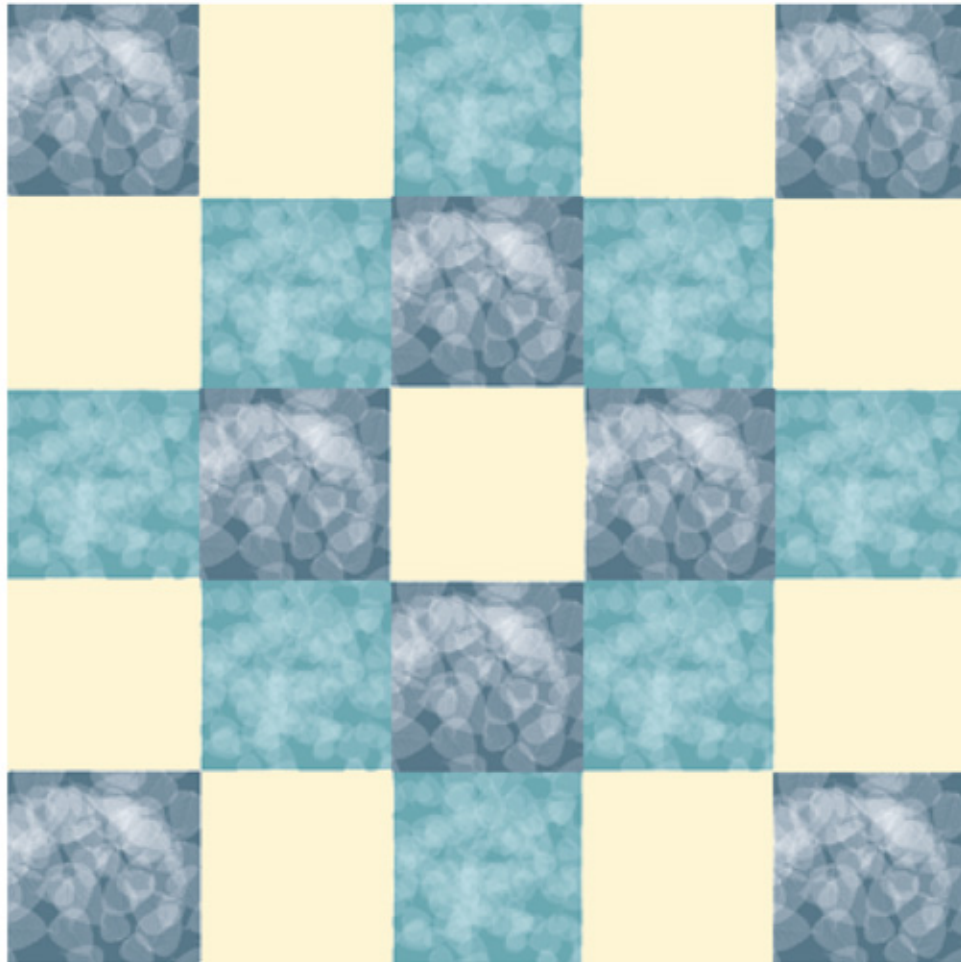


The Building Blocks Quilt

Will make a lap size quilt of aprox. 50"x50"



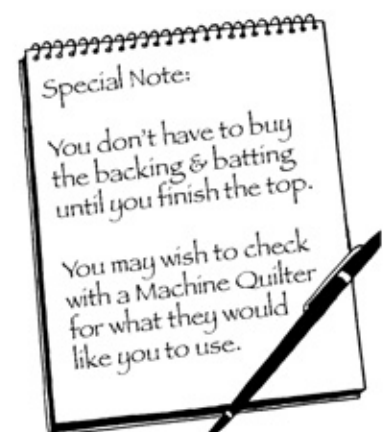
Instructions for cutting and assembling The Building Blocks Quilt[©]

One Block Only Beginner Quilting[©]

© 2007 Cat Canyon Graphics

Materials Needed

Print #1 (darkest)	2/3 yard (24 inches)
Print #2 (lighter)	2/3 yard (24 inches)
Background fabric	1 yard
Thread to match (white, natural or match #2 print)	1 spool
Backing 42" fabric	2 yards
Batting	enough for a 50x50 quilt



Cutting Instructions

You will cut 10½" strips of all the following fabrics:

(See illustration 1)

Print #1 (darkest)	2 strips
Print #2 (lighter)	2 strips
Background fabric	2 strips + one 10½" square

Strip sewing and additional cutting Instructions

You will **sew together** the following strips

A. Print #1 (darkest) & Print #2 1 strip each color

(see illustration 2)

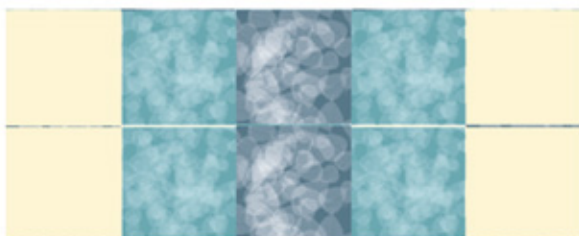
Then cut the joined pieces at the center fold, press the seams toward the darkest color. (You will have TWO 21" pieces*). Set aside.

B. Print #2 & Background fabric 1 strip each color

(see illustration 3)

Then cut the joined pieces at the center fold, press the seams toward the darkest color. (You will have TWO 21" pieces*). Set aside.

At this point you will now join one "A" strip to one "B" strip. Press and then you will cut one background strip at the center fold and then attach to the above strip (so that you have a Background, Print #2, Print #1, Print #2, Background block) and press. (See below.) At this point, you will now cut this block into two 10½" strips. (See illustration 4.)



Take the remaining "A" strip and cut it into two 10½" strips. (See illustration 4.) Then take the 10½" background square and join it to the darkest end of the "A" strip. Sew and press seam to darkest fabric. Then join the other "A" strip to the background (darkest fabric end), sew and press. (See below.)

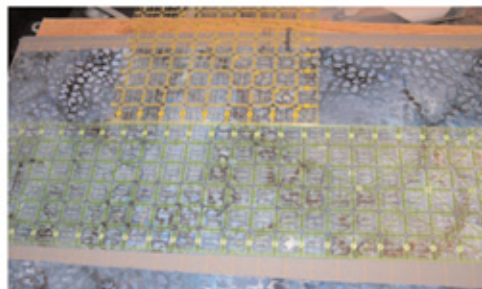


*The width of the fabric may vary a 44" fabric will half at 22" and a 42" fabric will half at 21". YOU MUST HAVE NO LESS THAN 21". If you have 22"—do not cut off any fabric until told to do so!

Cutting

Cutting Strips of Fabric:

Illustration 1



Sewing Strips of Fabric:

Illustration 2



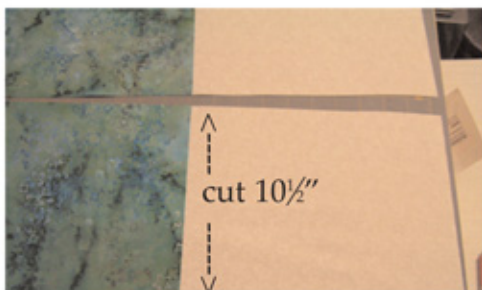
Cutting Strips of Fabric:

Illustration 3



Cutting Strips of Fabric:

Illustration 4



REMAINING STRIPS:

Print#1

1 strip to be cut in half at fold (= two 21" strips x 10½")

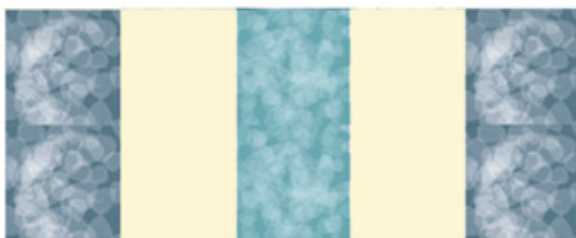
Print #1 & Background fabric

sew remaining background strip & one Print #1 strip together and press.

Print#2 & Background fabric

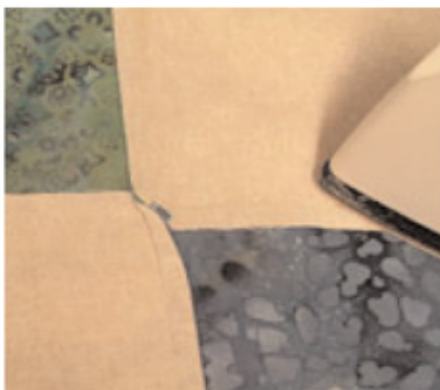
(the other sewn strip from above— the other "B" strip)

Now you will join one Print #1 strip to the remaining "B" strip, press. Then take the Print #1/background strip and join it to the Print #2 edge. Sew and press. Then cut into two 10½" strips. (See below.)



Last Step: You will have FIVE STRIPS which you will now assemble matching the block illustration below. Press each long seam, making sure you press to the darkest fabric. Once assembled, you have finished the Quilt top and are now ready to add batting and backing. Then you will finish the quilt by tying or quilting.

Pressing to the dark fabric.



Center detail of pressed seams.

